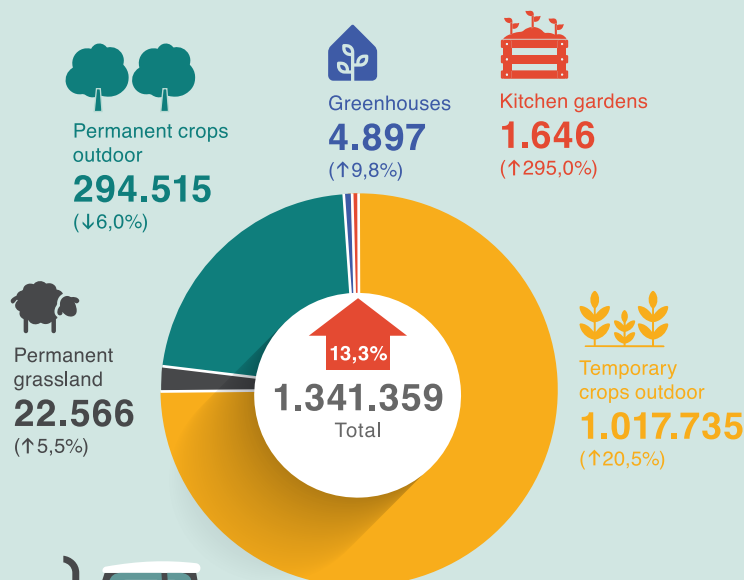


CENSUS OF AGRICULTURE 2020



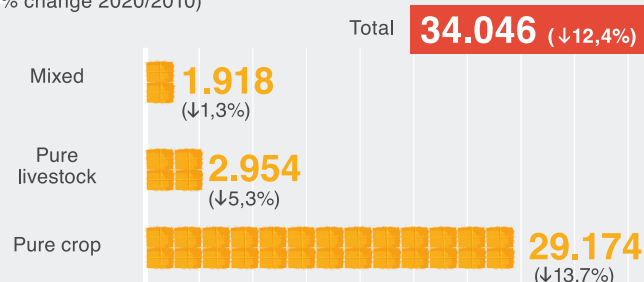
UTILISED AGRICULTURAL AREA BY MAIN TYPE OF CROP

(decares, % change 2020/2010)



HOLDINGS BY TYPE

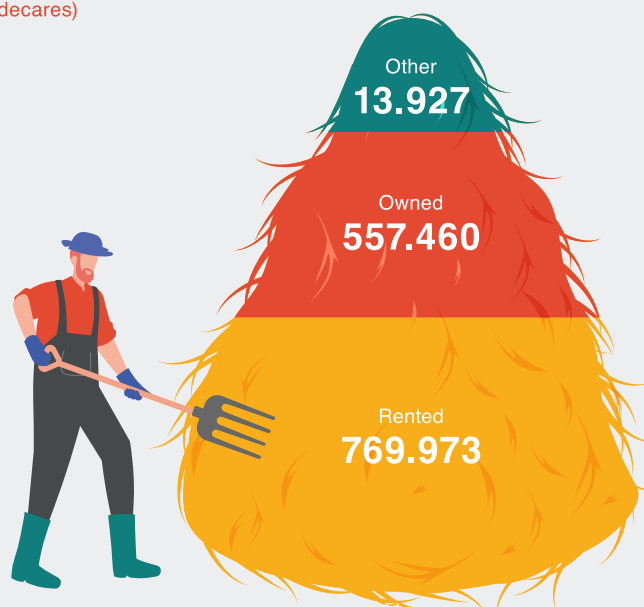
(% change 2020/2010)



25.036 holdings benefited from rural development measures

UTILISED AGRICULTURAL AREA BY TYPE OF TENURE

(decares)



UTILISED AGRICULTURAL AREA BY DISTRICT

(decares)



ORGANIC PRODUCTION AREA

(decares)

2010
19.987

2020
54.650

AREAS OF MAIN CROPS

(decares, % change 2020/2010)

Plants
harvested green
518.658
(↑57,8%)



Cereals for grain
278.733
(↓16,2%)



Olive plantations
120.686
(↑3,6%)



Vineyards
65.997
(↓13,4%)



Citrus
34.230
(↓9,0%)



Potatoes
40.393
(↓3,2%)



NUMBER OF ANIMALS BY TYPE

(% change 2020/2010)

Poultry
4.730.039
(↑55,2%)



Sheep
327.882
(↑22,6%)



Pigs
323.522
(↓2,1%)



Goats
232.831
(↓3,6%)



Rabbits
89.104
(↓23,3%)



Bovine
83.561
(↑56,4%)



Bee hives
38.133
(↑86,7%)



HOLDERS OR MANAGERS OF HOLDINGS BY SEX AND AGE CLASS

34.046

26.835
Males



7.211
Females



2.515



15-44

466



3.936



45-54

1.111



8.078



55-64

2.132



12.306



65+

3.502



BY LEVEL OF TRAINING

● Full agricultural training ● Basic training ● Practical experience only

165 2.048



36.646

2010

372 10.366



23.308

2020



EMPLOYMENT

Total **105.187** (↓6,3%)

Holders and family members
66.353
(↓14,6%)



Permanent employees
5.993
(↑39,2%)



Seasonal workers
32.841
(↑8,7%)

