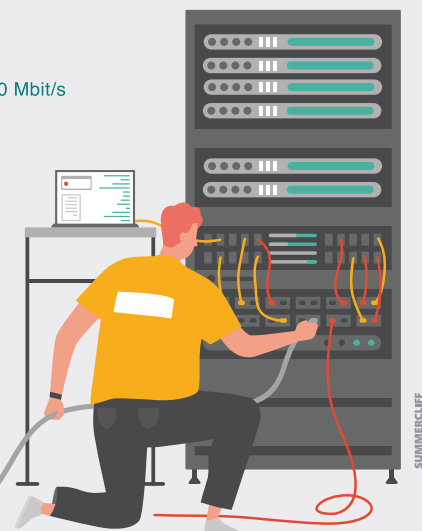
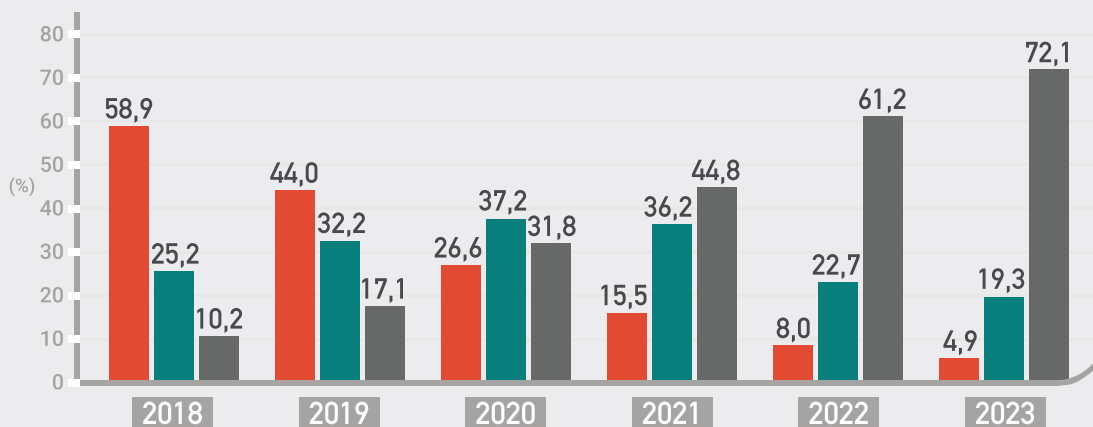


INFORMATION AND COMMUNICATION TECHNOLOGIES USAGE AND E-COMMERCE IN ENTERPRISES 2023

SPEED

Maximum contracted download speed of the fastest Internet connection of the enterprise (% on total number of enterprises)

- Less than 30 Mbit/s
- At least 30 Mbit/s but less than 100 Mbit/s
- More than 100 Mbit/s



ENTERPRISES HAVING A WEBSITE

Total (10+)

68,8%

65,5%



SMALL
(10-49)

87,7%



MEDIUM
(50-249)

96,4%



LARGE
(250+)

ENTERPRISES HAVING WEB SALES (Websites / Apps)

(the data reference period is the previous year)

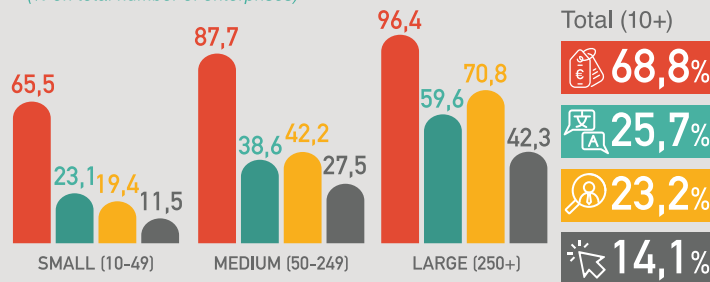


Note:

- The survey covers all enterprises with 10+ persons employed for selected sections of the economy.
- The enterprise size (Small, Medium, Large) is determined according to the number of persons employed.

WEBSITE FACILITIES

(% on total number of enterprises)



- Description of goods or services, price lists
- Content available in at least two languages
- Advertisement of open job positions or online job application
- Online ordering or reservation or booking

Total (10+)

68,8%

25,7%

23,2%

14,1%

ENTERPRISES USING ARTIFICIAL INTELLIGENCE TECHNOLOGIES

Total (10+)

4,7%

