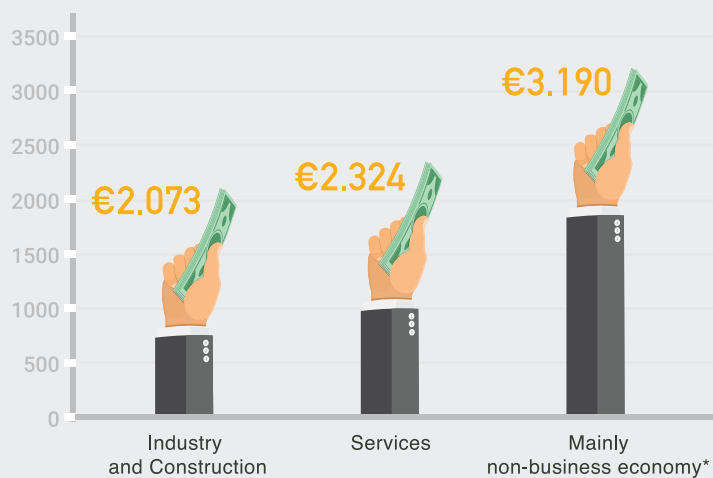


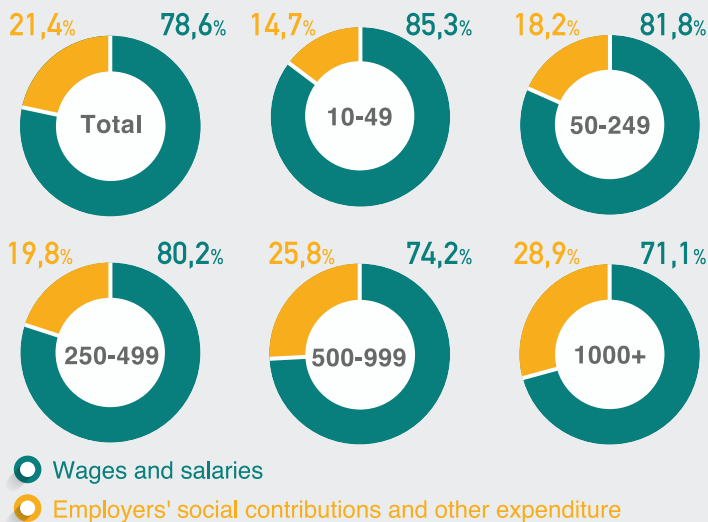
# LABOUR COST 2020

## MONTHLY LABOUR COST PER EMPLOYEE €2.528



\*Public Administration, Education, Health, Arts, Recreation, Personal Services

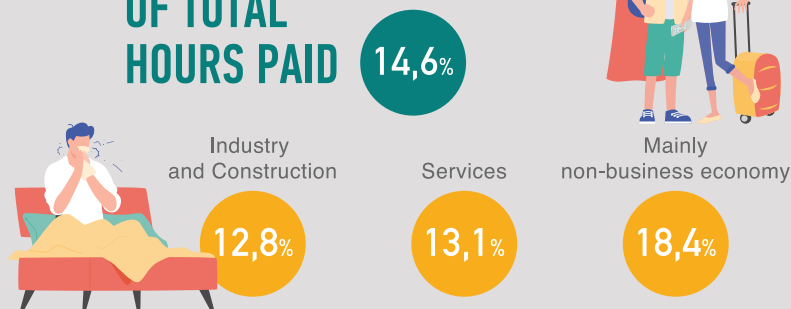
## COMPONENTS OF LABOUR COST BY SIZE GROUP (Persons)



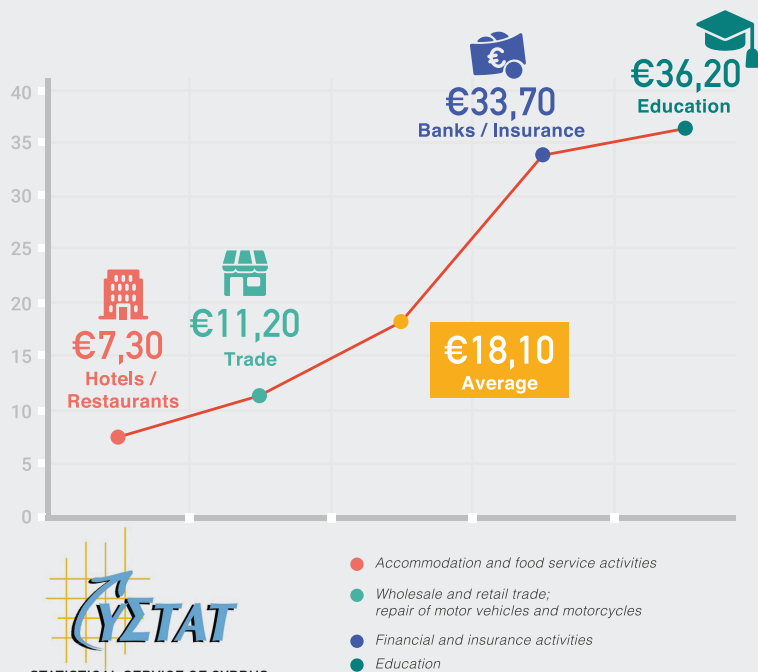
## NORMAL HOURS OF WORK PER WEEK PER EMPLOYEE 38,6



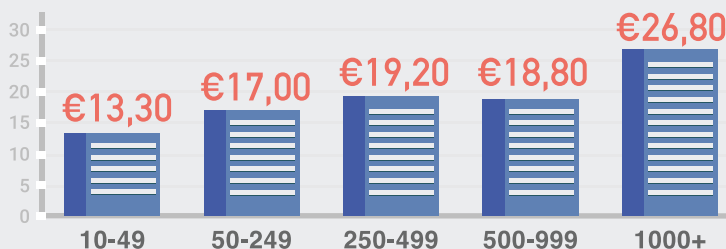
## HOURS OF ABSENCE PAID, AS A PERCENTAGE OF TOTAL HOURS PAID



## HOURLY LABOUR COST Activities with the lowest and highest estimates



## HOURLY LABOUR COST BY SIZE GROUP (Persons)



## % CHANGE 2020/2016

