

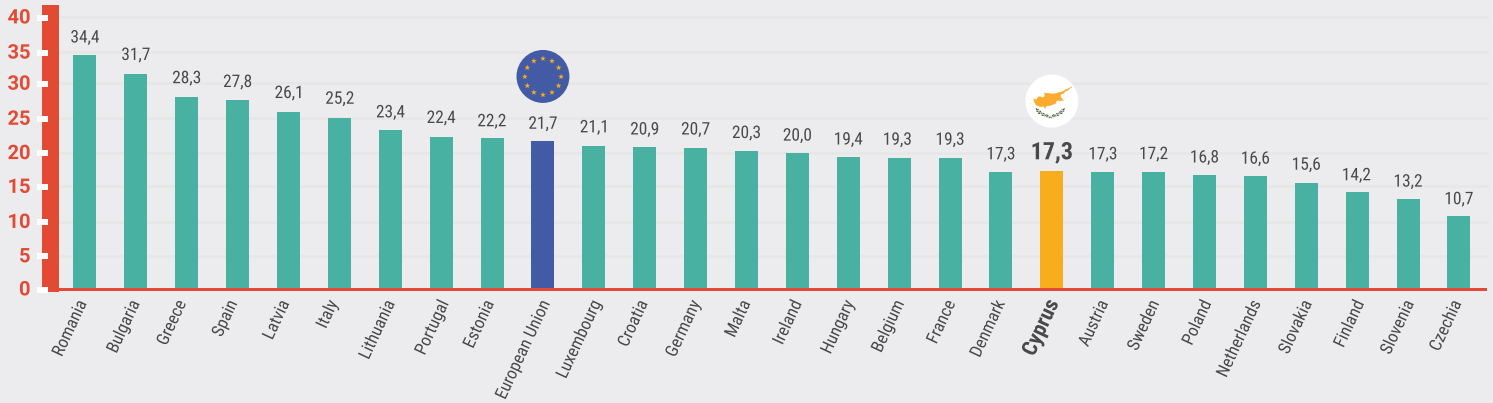
POVERTY AND SOCIAL EXCLUSION 2021

RISK OF POVERTY OR SOCIAL EXCLUSION

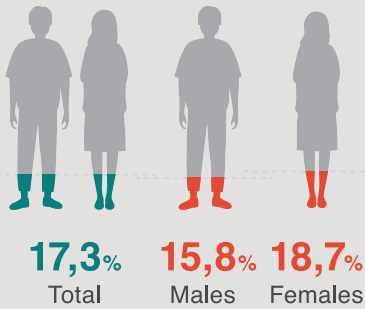
At-risk-of-poverty or social exclusion rate is the percentage of the population who are: at risk of monetary poverty or severely materially and socially deprived or living in a household with a very low work intensity. Persons are only counted once even if they are present in several sub-indicators.



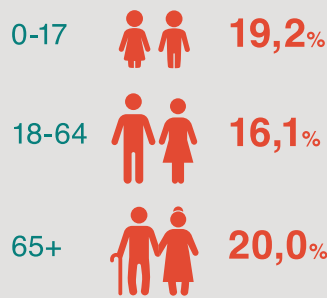
↓ 2.000 persons 2021/2020 (↓ 0,3%)



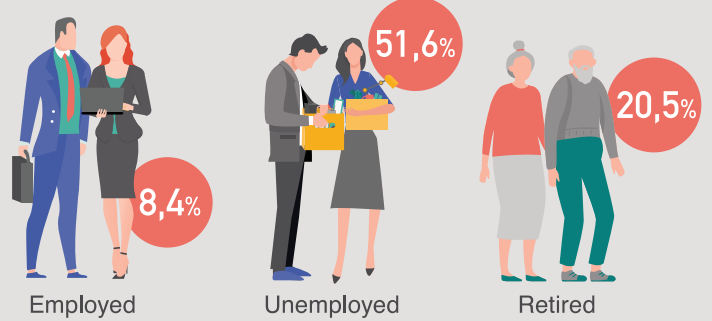
BY SEX



BY AGE GROUP



BY MOST FREQUENT ACTIVITY STATUS (18+)



RISK OF POVERTY

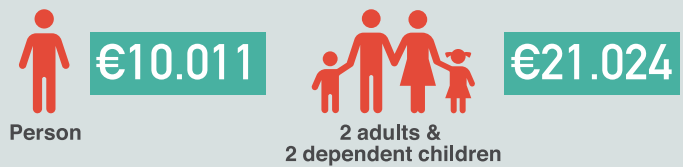
The at-risk-of-poverty rate is the share of persons with yearly equivalised disposable income below the risk-of-poverty threshold. It measures relative poverty and not absolute poverty.

BEFORE AND AFTER SOCIAL BENEFITS

By household type



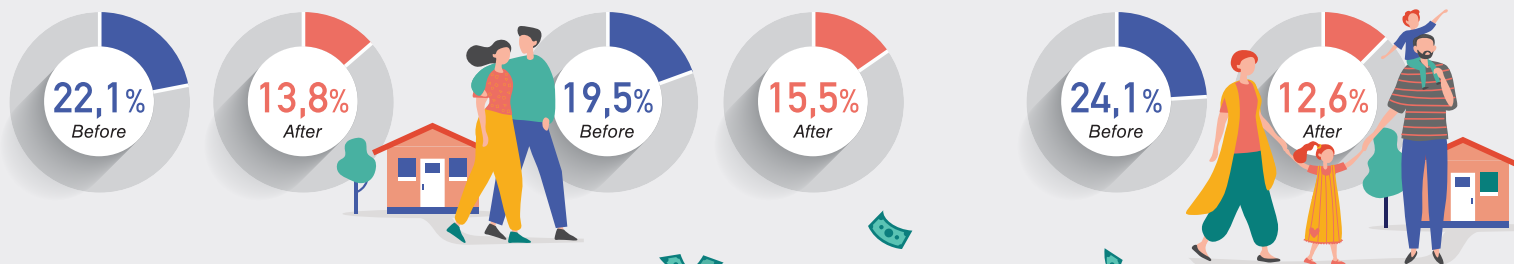
POVERTY THRESHOLD



Total

Households with no dependent children

Households with dependent children



MEAN EQUIVALISED DISPOSABLE INCOME PER PERSON

€19.649

↑ 1,1% 2020/2021



STATISTICAL SERVICE OF CYPRUS