

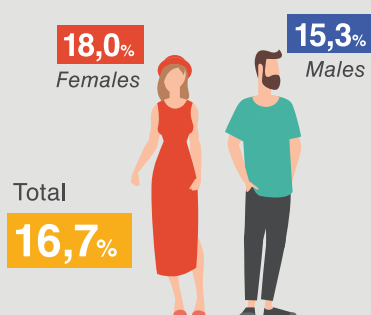
POVERTY AND SOCIAL EXCLUSION 2022

RISK OF POVERTY OR SOCIAL EXCLUSION

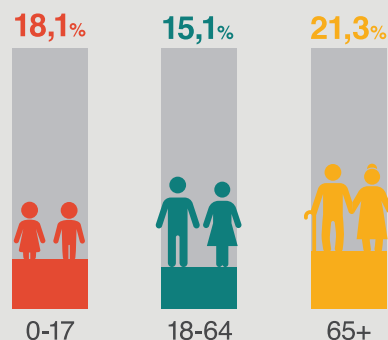
↓ 4.000 persons 2022/2021 (↓ 0,6%)

At-risk-of-poverty or social exclusion rate is the percentage of the population who are: at risk of monetary poverty or severely materially and socially deprived or living in a household with a very low work intensity. Persons are only counted once even if they are present in several sub-indicators.

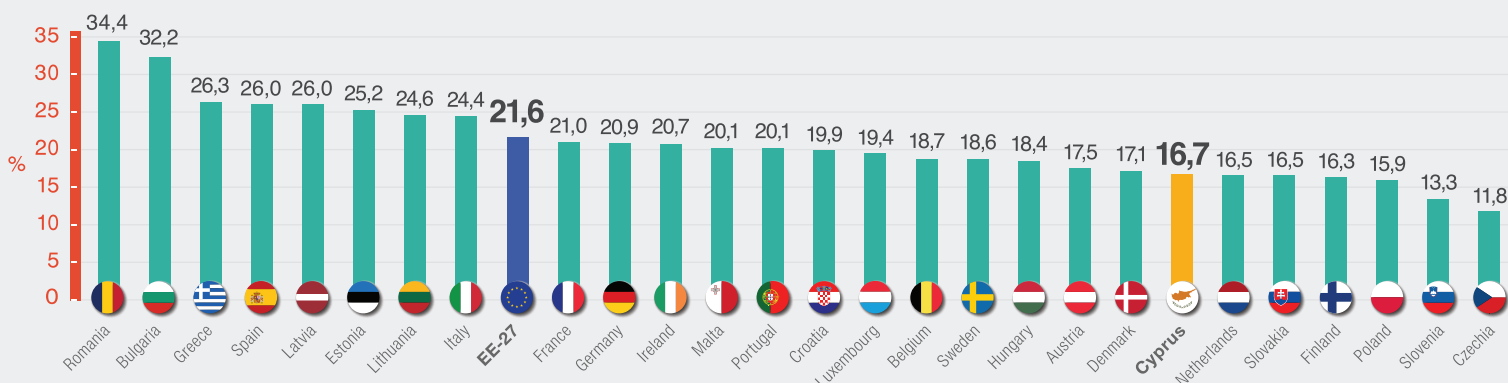
BY SEX



BY AGE GROUP



BY MOST FREQUENT ACTIVITY STATUS (18+)



AT-RISK-OF-POVERTY RATE BEFORE AND AFTER SOCIAL BENEFITS

By household type

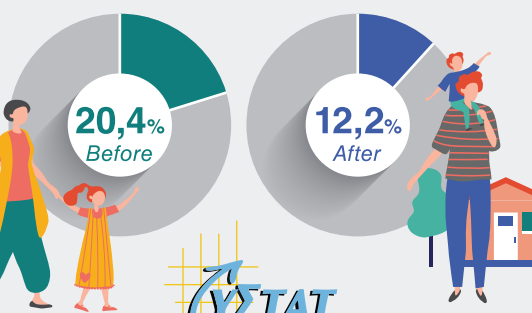
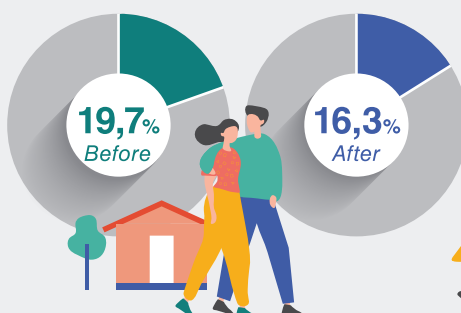
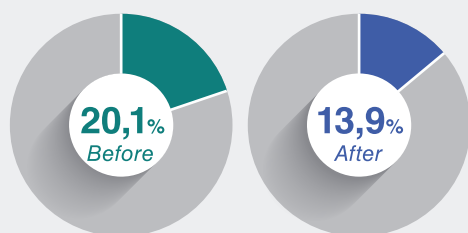
The at-risk-of-poverty rate is the share of persons with yearly equivalised disposable income below the risk-of-poverty threshold. It measures relative poverty and not absolute poverty.



Total

Households with no dependent children

Households with dependent children



POVERTY THRESHOLD

2 adults
and 2 dependent
children

€22.498

↑ 7% 2022/2021

Person

€10.713