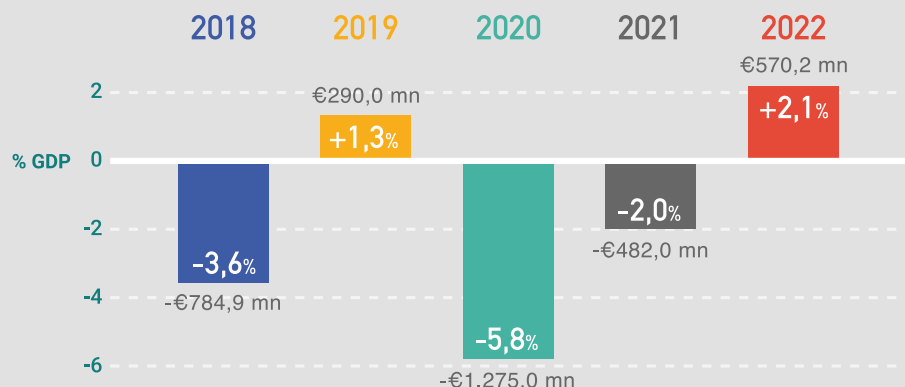


PUBLIC FINANCE 2022

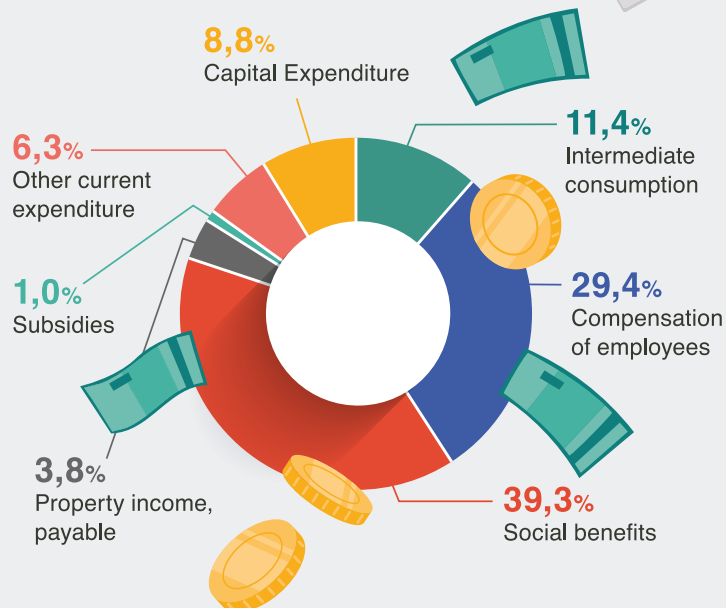
Data in accordance with the Excessive Deficit Procedure (EDP) Notification



TOTAL EXPENDITURE

€10.751,3 mn

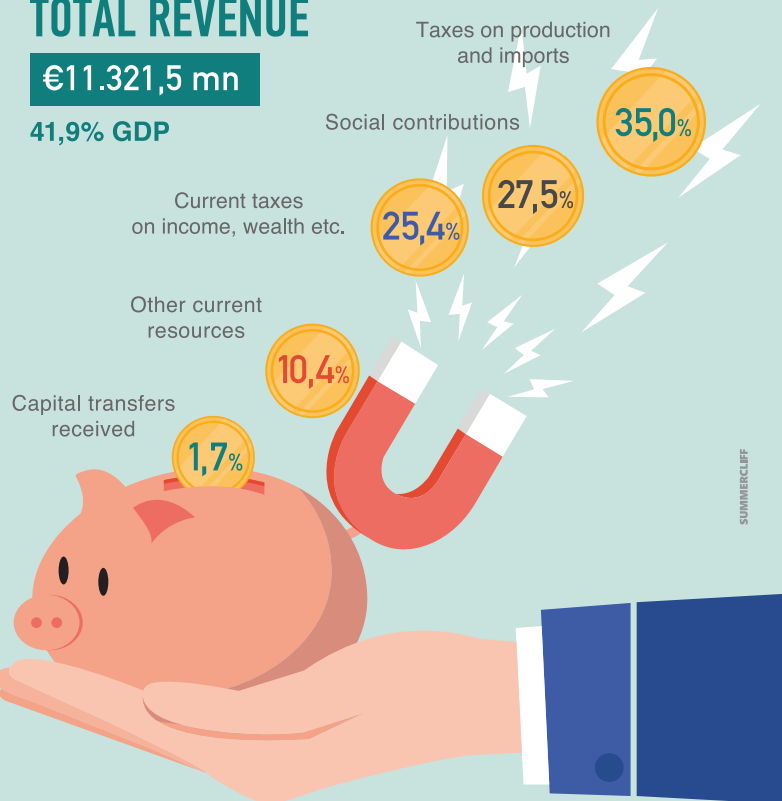
39,8% GDP



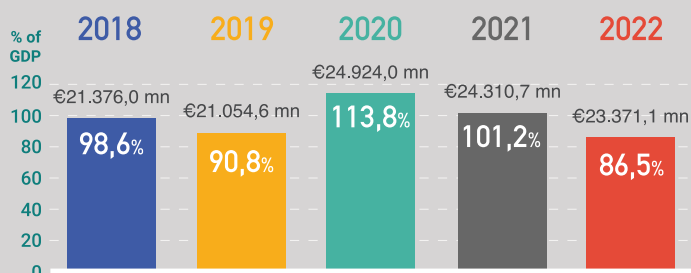
TOTAL REVENUE

€11.321,5 mn

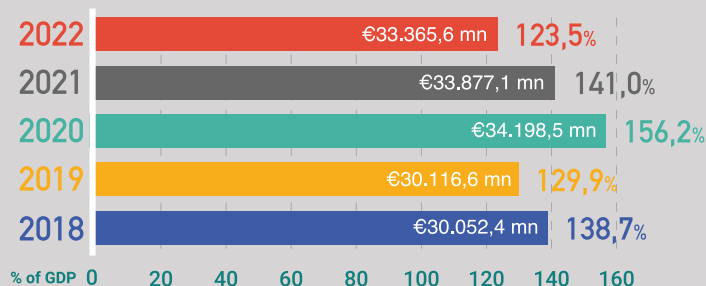
41,9% GDP



CONSOLIDATED GENERAL GOVERNMENT GROSS DEBT



UNCONSOLIDATED GENERAL GOVERNMENT GROSS DEBT



The difference between consolidated and unconsolidated public gross debt is the borrowing between General Government entities.