

RESEARCH & DEVELOPMENT 2020

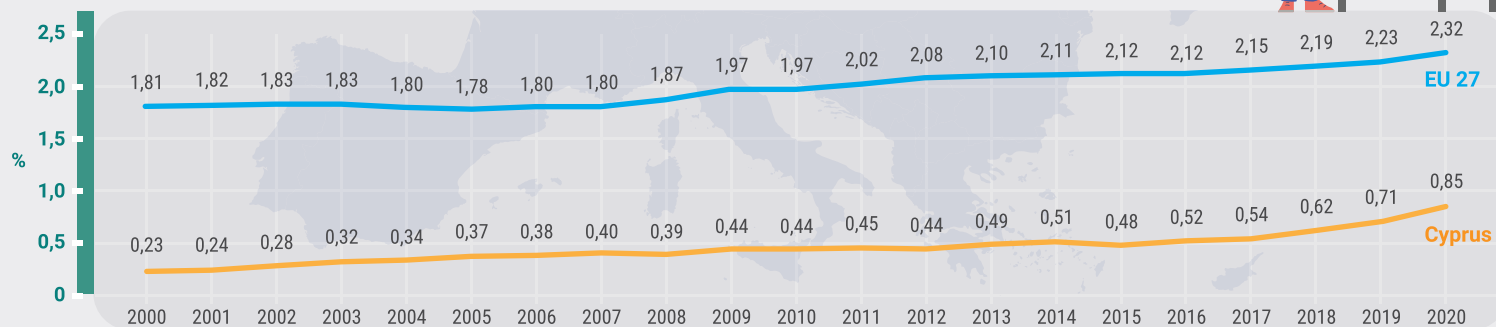
TOTAL R&D EXPENDITURE

€184.764.000

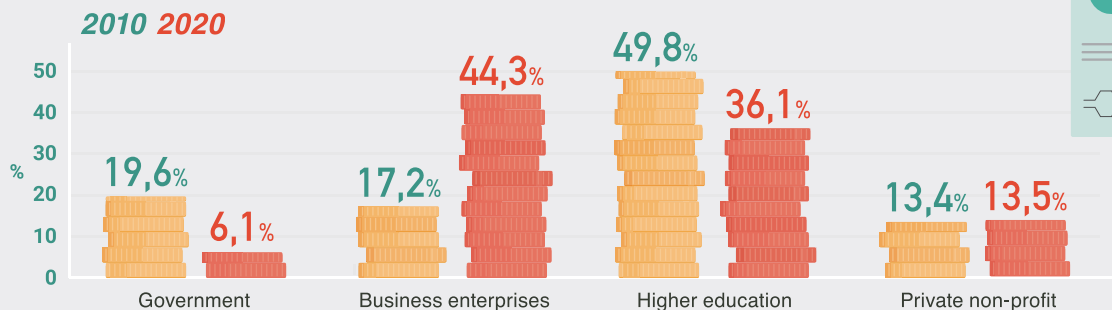
+12,4%

increase
compared to 2019

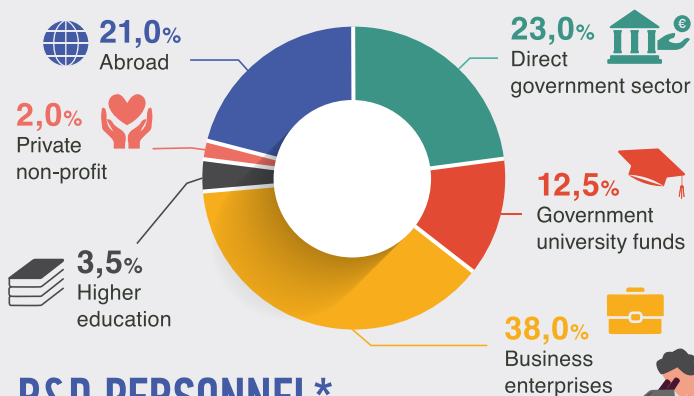
R&D EXPENDITURE AS % OF GDP



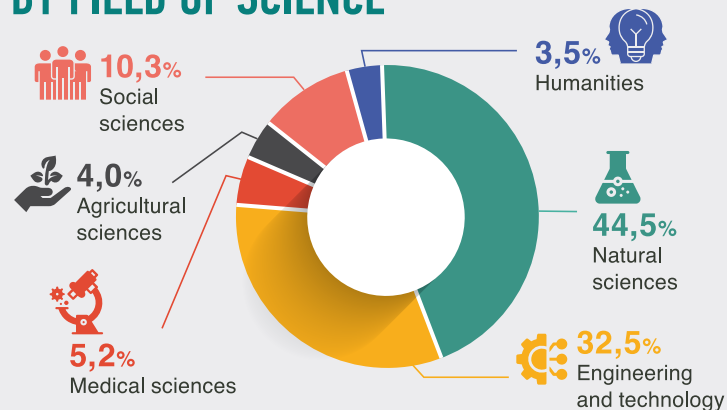
R&D EXPENDITURE BY SECTOR OF PERFORMANCE



R&D EXPENDITURE
BY SOURCE OF FUNDS



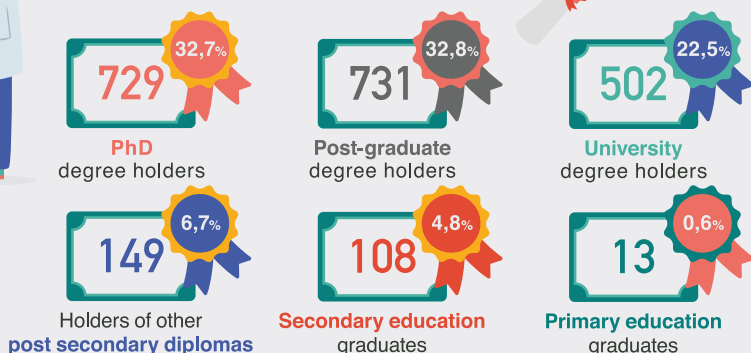
BY FIELD OF SCIENCE



R&D PERSONNEL*
BY GENDER



BY LEVEL OF QUALIFICATION



* R&D personnel: All persons (researchers, technicians and other supporting staff) employed directly on R&D, as well as those providing direct services such as R&D managers, administrators and clerical staff. It is expressed in Full-time Equivalent terms, which is the total time devoted to research by a person during one year.